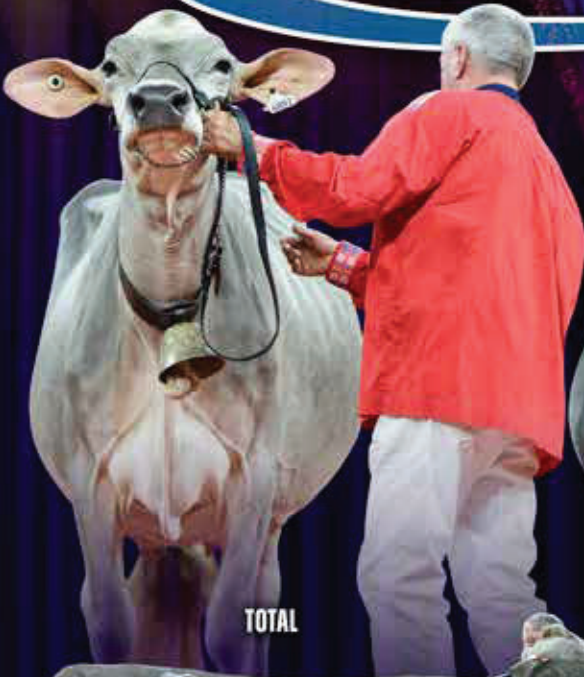


KADE

DAREDEVIL

# NEW GENERATION GENETICS



TOTAL



RASTA



CARTER



TOTAL



DAREDEVIL



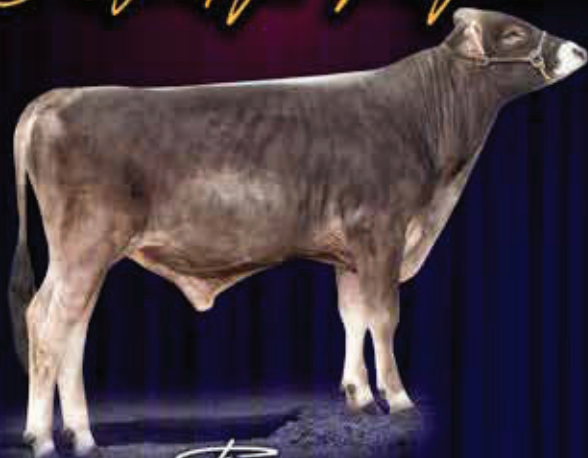
SPARK



DECEMBER 2024

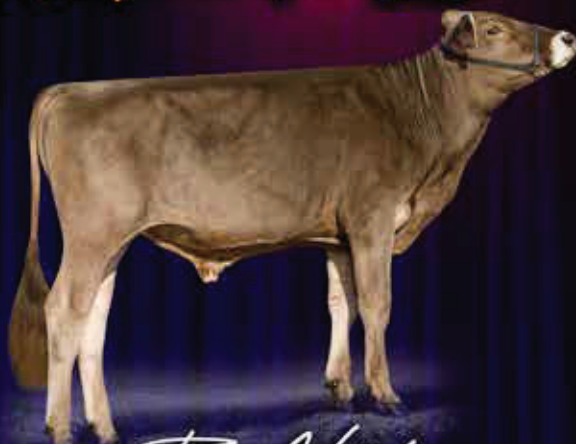
# HIGH PPR BULLS

*Designed for Profitability, Engineered to Last*



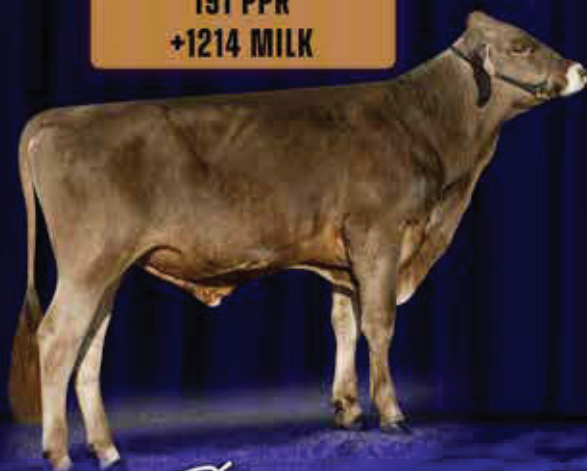
HILLTOP ACRES P *Tampa* ETV

+6.0 LONGEVITY  
191 PPR  
+1214 MILK



HILLTOP ACRES *Top Notch* ETV

+56 / +.10% FAT  
+1.20 UDC  
562 NMS



KULP-GEN *Champagne* ETV

194 PPR  
+2.4 DPR  
2.68 SCS

SEXED SEMEN  
AVAILABLE ON  
ALL FOUR BULLS!

Preferred  
Sex



NOR BERT *Jim Beam*

+1270 MILK  
+1.03 UDC  
+54 / +.05% PROTEIN

*Order semen today at:*  
**BROWNSWISS.COM**



### PACTOLE X LUCKY CHANCE X BUSH

REG: 840003231544961 | aAa 423  
Kappa Casein: BB | Beta Cas: A2/A2

SIRE: PACTOLE

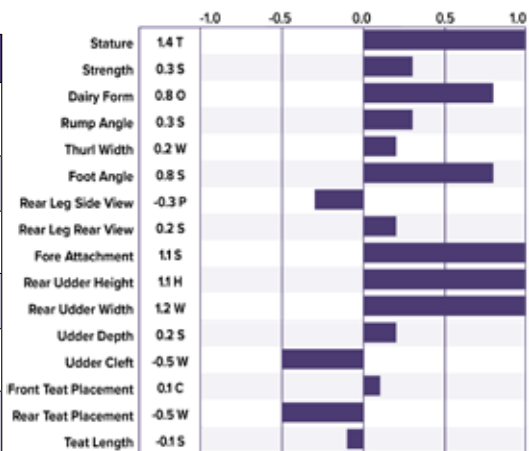
DAM: PERRY BROOK LUCKY INDIA 'V 87 V 88 MS'  
1-10 323D 3X 21,830 4.8 1,052 3.5 768  
2-10 305D 3X 24,905 4.4 1,096 3.6 897

MGD: PERRY BROOK BUSH INDIAN 'V 88 E 90 MS'  
4-02 345D 3X 25,040 4.5 1,138 3.7 923  
5-04 365D 3X 21,970 4.4 967 3.8 836



DAM: PERRY BROOK LUCKY INDIA  
2ND LACTATION 'V 87 V 88 MS'

12/24 G-CDCB PERFORMANCE			
MILK 1342	FAT 62 / 0.03%	PROTEIN 59 / 0.06%	PPR 229
PROD. 66%R 0 DTRS/O HRDS TYPE 67%R			
PL 3.1	UDC 0.71	SCS 2.80	TYPE 0.4
Conception (SCR) N/A		HCR 3.3	CCR 2.4
CM\$ 715	Milking Speed 101		LIV -0.2
CE 2.9%	NM\$ 701	DPR 2.0	MOB 0.3



MGD: PERRY BROOK BUSH INDIAN  
2ND LACTATION 'V 88 E 90 MS'



### PERFECTION X MAJESTE X CADENCE

REG: 840003264521233 | aAa 345  
Kappa Casein: BB | Beta Cas: A2/A2

SIRE: HILLTOP ACRES PERFECTION ET™™

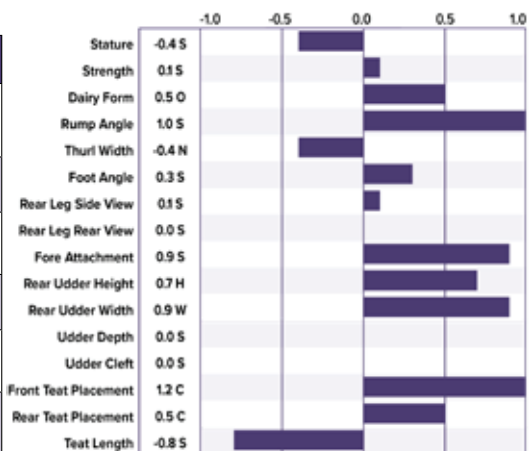
DAM: HILLTOP ACRES M TERESA ET 'V 87 V 87 MS'  
1-11 340D 3X 34,246 4.2 1,423 3.3 1,137  
3-00 365D 3X 40,200 4.4 1,761 3.7 1,491

MGD: HILLTOP ACRES CD TWINKIE 'E 90 E 90 MS'  
3-00 312D 3X 30,760 4.6 1,417 3.4 1,051  
4-00 316D 3X 30,716 4.0 1,242 3.4 1,042



DAM: HILLTOP ACRES M TERESA ET  
'V 87 V 87 MS'

12/24 G-CDCB PERFORMANCE			
MILK 1214	FAT 47 / -0.02%	PROTEIN 49 / 0.03%	PPR 191
PROD. 64%R 0 DTRS/O HRDS TYPE 67%R			
PL 6.0	UDC 0.71	SCS 2.70	TYPE 0.7
Conception (SCR) N/A		HCR 0.1	CCR -0.8
CM\$ 732	Milking Speed 105		LIV 3.5
CE 2.2%	NM\$ 719	DPR -0.5	MOB 0.2



HILLTOP ACRES P TAMPA ETV



**DAM: HILLTOP ACRES K TAMMIE ET**  
2ND LACTATION 'E 90 E 91 MS'



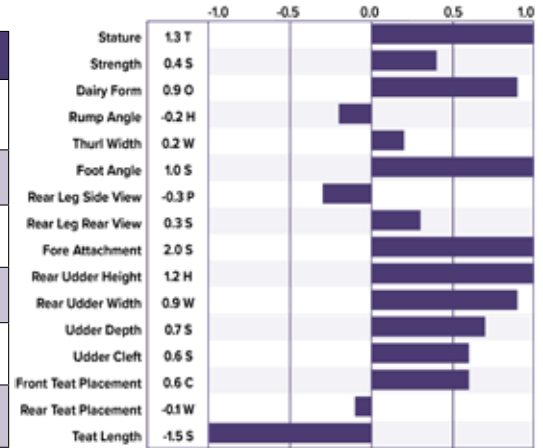
**MGD: HILLTOP ACRES DB TABBY ETV**  
2ND LACTATION 'E 91 E 91 MS'

**DESIGN X KINGSLEY X DOBOY**

REG: 840003256390109 | aAa 216  
Kappa Casein: BB | Beta Cas: A1/A2 | BH14C

SIRE: **HF DESIGN ET \*TM**  
DAM: **HILLTOP ACRES K TAMMIE ET 'E 90 E 91 MS'**  
1-11 305D 3X 28,940 4.6 1,321 3.4 996  
2-10 305D 3X 33,440 5.0 1,667 3.7 1,244  
MGD: **HILLTOP ACRES DB TABBY ETV 'E 91 E 91 MS'**  
1-10 365D 3X 29,810 4.8 1,418 3.5 1,032  
3-05 365D 3X 40,090 5.0 2,015 3.7 1,500

12/24 G-CDCB PERFORMANCE			
MILK	FAT	PROTEIN	PPR
862	56 / 0.10%	45 / 0.08%	175
PROD. 65%R 0 DTRS/0 HRDS TYPE 67%R			
PL 2.6	UDC 1.20	SCS 2.90	TYPE 0.9
Conception (SCR) -0.8		HCR 2.6	CCR 1.0
CM\$ 575	Milking Speed 105		LIV 0.6
CE 2.7%	NM\$ 562	DPR -0.3	MOB 0.3



**DAM: HILLTOP ACRES PRINCESS ETV**  
2ND LACTATION 'E 91 E 91 MS'



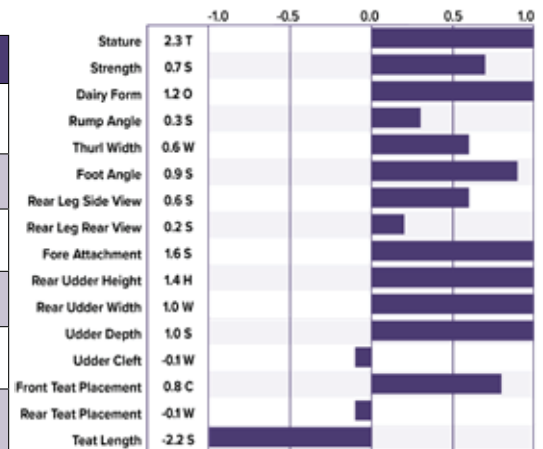
**MGD: HILLTOP ACRES CAD PAULA**  
'V 87 V 87 MS'

**PACTOLE X KICKSTART X CADENCE**

REG: 840003254238464 | aAa 624  
Kappa Casein: BB | Beta Cas: A1/A2

SIRE: **PACTOLE**  
DAM: **HILLTOP ACRES PRINCESS ETV 'E 91 E 91 MS'**  
1-11 305D 3X 24,560 4.8 1,173 3.6 879  
2-11 365D 3X 44,163 5.7 2,525 3.8 1,696  
MGD: **HILLTOP ACRES CAD PAULA 'V 87 V 87 MS'**  
1-11 365D 3X 32,990 4.6 1,522 3.8 1,257  
7-03 365D 3X 38,860 4.8 1,878 3.7 1,433

12/24 G-CDCB PERFORMANCE			
MILK	FAT	PROTEIN	PPR
419	56 / 0.19%	45 / 0.15%	206
PROD. 66%R 0 DTRS/0 HRDS TYPE 68%R			
PL 3.6	UDC 1.08	SCS 2.73	TYPE 0.8
Conception (SCR) -1.4		HCR 2.5	CCR 2.1
CM\$ 641	Milking Speed 106		LIV 1.8
CE 3.1%	NM\$ 617	DPR 1.4	MOB 0.3



**1 PROTEIN%**

**1 FAT**

**GUY X CANYON X BLOOMING**

REG: BSCHE120177767635 | aAa 243651  
Kappa Casein: BB | Beta Cas: A1/A2

SIRE: SCHERMA NORO GUY

DAM: MIMI SG-ET 'V 86 V 86 MS'  
2-00 305D 2X 19,235 3.9 750 3.8 728  
3-02 305D 2X 23,210 4.3 988 3.9 911

MGD: BLOOMING MANA 'V 85 V 87 MS'  
6-03 305D 2X 22,611 4.6 1,049 3.6 822  
LIFETIME: 1,851D 118,582M 5,410F 4,434P

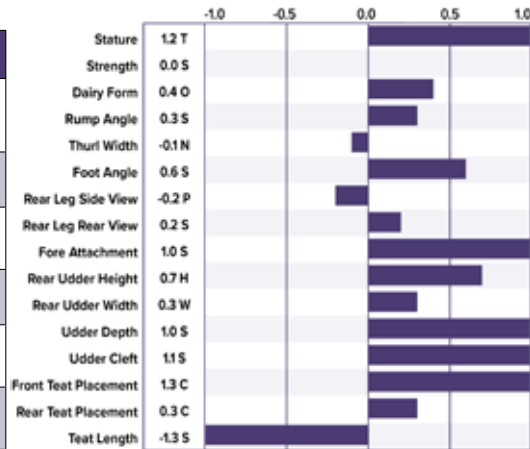


DAM: MIMI SG  
'V 86 V 86 MS'



MGD: BLOOMING MANA  
'V 85 V 87 MS'

8/24 G-CDCB PERFORMANCE			
MILK 972	FAT 28 / -0.06%	PROTEIN 38 / 0.02%	PPR 175
PROD. 58%R 0 DTRS/0 HRDS TYPE 62%R			
PL 4.4	UDC 0.93	SCS 2.82	TYPE 0.7
Conception (SCR) N/A		HCR 1.1	CCR 1.0
CM\$ 558	Milking Speed 101		LIV 2.1
CE 2.1%	NM\$ 549	DPR 2.4	MOB 0.3



**RASTAROKET X LUCKY CHANCE X BUSH**

REG: 840003231540586 | aAa 261  
Kappa Casein: AB | Beta Cas: A1/A2

SIRE: RASTAROKET™™

DAM: PERRY BROOK LUCKY INDIA 'V 87 V 88 MS'  
1-10 323D 3X 21,830 4.8 1,052 3.5 768  
2-10 305D 3X 24,905 4.4 1,096 3.6 897

MGD: PERRY BROOK BUSH INDIAN 'V 88 E 90 MS'  
4-02 345D 3X 25,040 4.5 1,138 3.7 923  
5-04 365D 3X 21,970 4.4 967 3.8 836

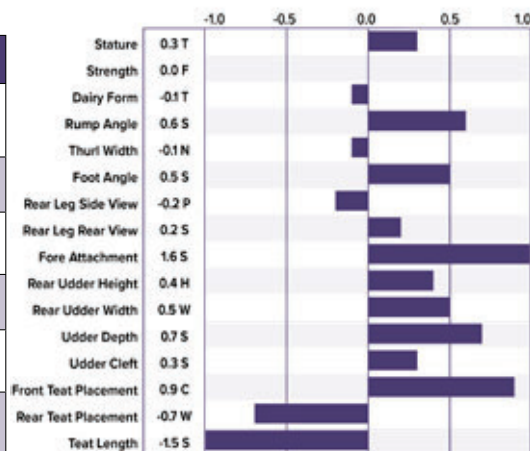


DAM: PERRY BROOK LUCKY INDIA  
2ND LACTATION 'V 87 V 88 MS'



MGD: PERRY BROOK BUSH INDIAN  
2ND LACTATION 'V 88 E 90 MS'

12/24 G-CDCB PERFORMANCE			
MILK 876	FAT 60 / 0.12%	PROTEIN 47 / 0.08%	PPR 195
PROD. 61%R 0 DTRS/0 HRDS TYPE 64%R			
PL 3.8	UDC 0.80	SCS 2.79	TYPE 0.4
Conception (SCR) N/A		HCR 0.6	CCR -0.4
CM\$ 673	Milking Speed 101		LIV 1.0
CE 2.4%	NM\$ 657	DPR 0.5	MOB 0.2





**DAM: HILLTOP ACRES DB WHISPER ETV**

'E 91 E 91 MS'  
2ND LACTATION



**3RD DAM: TOP ACRES SUPREME WIZARD ET**

'2E 95 E 94 MS'  
ALL AMERICAN '13 & '17, RES. ALL AMERICAN '12, '15 & '16  
GRAND CHAMPION WORLD DAIRY EXPO 2017

**TIME OUT X DOBOY X DURHAM**

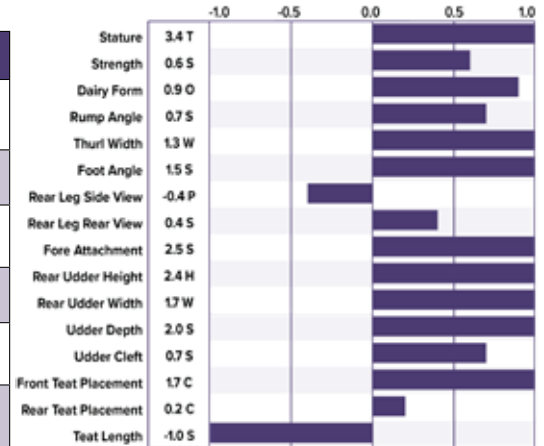
REG: 840003271198281 | aAa 234  
Kappa Casein: BB | Beta Cas: A1/A2

SIRE: JENNINGS GAP TIME OUT \*TM  
DAM: HILLTOP ACRES DB WHISPER ETV 'E 91 E 91 MS'  
3-05 365D 2X 24,186 4.3 1,040 3.5 838  
MGD: TOP ACRES DURHAM WINTU ET 'V 87 V 87 MS'  
2-08 175D 3X 13,701 3.7 481 3.0 355  
3RD DAM: TOP ACRES SUPREME WIZARD ET '2E 95 E 94 MS'  
GRAND CHAMPION WORLD DAIRY EXPO 2017



**1**TYPE  
**1**UDC

12/24 G-CDCB PERFORMANCE			
MILK 639	FAT 1 / -0.13%	PROTEIN 15 / -0.03%	PPR 71
PROD. 64%R 0 DTRS/0 HRDS TYPE 66%R			
PL 3.2	UDC 2.05	SCS 2.88	TYPE 1.5
Conception (SCR) N/A		HCR 0.7	CCR -2.0
CM\$ 176	Milking Speed 108		LIV 0.5
CE 2.5%	NM\$ 176	DPR -1.2	MOB 0.5



**DAM: GOLDHILL OPTIMAL CHICCA ET**

'V 85 V 87 MS'



**MGD: GOLDHILL BENDER CALUNA SG ET**

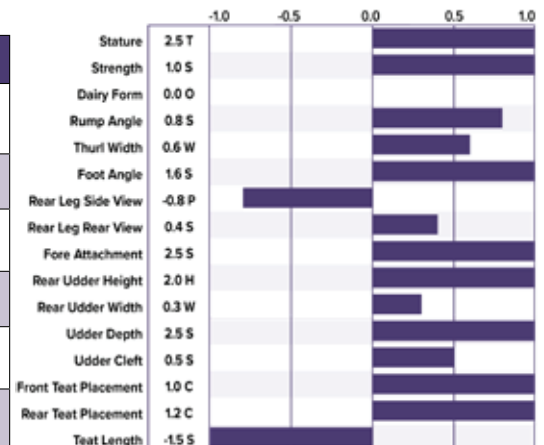
'E 94 E 97 MS'

**GUY X OPTIMAL X BENDER**

REG: BSCH120176812534 | aAa 246315  
Kappa Casein: BB | Beta Cas: A1/A2

SIRE: SCHERMA NORO GUY  
DAM: GOLDHILL OPTIMAL CHICCA-ET 'V 85 V 87 MS'  
2-06 365D 2X 23,195 4.6 1,067 3.9 906  
MGD: GOLDHILL BENDER CALUNA SG-ET 'E 94 E 97 MS'  
4-08 305D 2X 22,231 4.2 928 3.8 851  
5-09 305D 2X 27,604 4.4 1,226 3.6 999  
LIFETIME: 1,551D 109,418M 4,553F 4,112P

12/24 G-CDCB PERFORMANCE			
MILK 616	FAT 19 / -0.03%	PROTEIN 34 / 0.06%	PPR 143
PROD. 59%R 0 DTRS/0 HRDS TYPE 62%R			
PL 2.9	UDC 1.52	SCS 2.79	TYPE 0.8
Conception (SCR) N/A		HCR 2.0	CCR -0.2
CM\$ 344	Milking Speed 100		LIV -0.3
CE 2.3%	NM\$ 331	DPR 1.1	MOB 0.5



**AMIR X BRICE X HAEGAR**

REG: BSCHE120170794676 | aAa 615243  
Kappa Casein: BB | Beta Cas: A2/A2

SIRE: **STUDER'S BS ARROW AMIR**  
DAM: **BRICE BEILA 'V 87 V 88 MS'**  
2-06 300D 2X 18,078 4.2 758 3.6 648  
R.I.P 3-04 212D 2X 12,002 4.0 485 4.0 478  
MGD: **HAEGER HANNA 'V 86 V 88 MS'**  
3-04 305D 2X 24,324 4.2 1,032 3.6 867  
4-10 305D 2X 26,952 4.5 1,221 3.7 1,005  
6-01 305D 2X 24,454 5.1 1,142 3.4 772

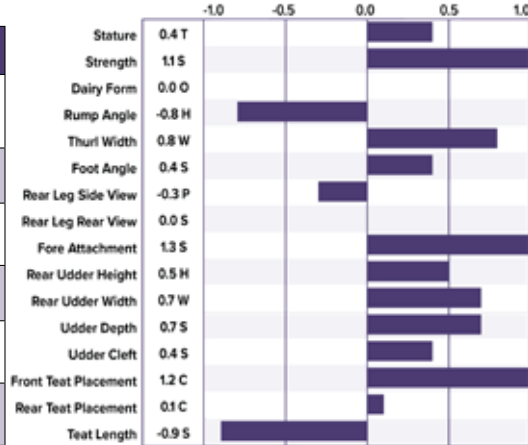


**DAM: BRICE BEILA**  
'V 87 V 88 MS'



**BOLERO**

12/24 G-CDCB PERFORMANCE			
MILK 516	FAT 21 / 0.00%	PROTEIN 24 / 0.03%	PPR 127
PROD. 63%R 0 DTRS/0 HRDS TYPE 65%R			
PL 2.5	UDC 0.87	SCS 2.88	TYPE 0.6
Conception (SCR) N/A		HCR -2.5	CCR -1.9
CM\$ 294	Milking Speed 96		LIV 1.8
CE 2.6%	NM\$ 287	DPR 2.3	MOB 0.1



**ELMSTAR X LUCKY CARL X ARCHER**

REG: 840003218804016 | aAa 234  
Kappa Casein: AB | Beta Cas: A2/A2

SIRE: **ELMERS LENNOX ELMSTAR \*TM**  
DAM: **HF LC CHASING DREAMS ET 'V 88 V 88 MS'**  
2-03 365D 2X 26,516 4.7 1,246 3.6 952  
3-11 365D 2X 31,208 4.7 1,457 3.7 1,147  
MGD: **HF ARCHER DREAMER 'V 87 V 88 MS'**  
4-03 337D 2X 23,169 5.2 1,214 3.7 867  
5-05 365D 2X 25,980 4.8 1,258 3.6 932

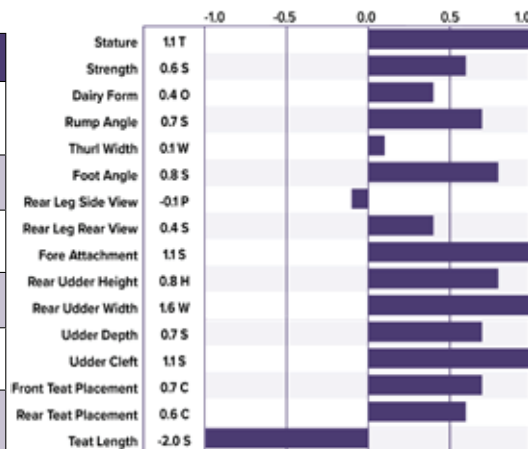


**NORTHKILL CREEK GRANDSLAM TWIN**  
JUNIOR CHAMPION ALL AMERICAN SHOW 2024  
2ND PLACE SPRING YEARLING WORLD DAIRY EXPO 2024  
OWNED BY HANNAH BALTHASER, PENNSYLVANIA



**JENLAR DESIGN WORTH IT**  
5TH PLACE FALL CALF WORLD DAIRY EXPO 2024  
OWNED BY BRIANNA MEYER, WISCONSIN

12/24 G-CDCB PERFORMANCE			
MILK 466	FAT 33 / 0.07%	PROTEIN 32 / 0.08%	PPR 119
PROD. 74%R 0 DTRS/0 HRDS TYPE 72%R			
PL 0.4	UDC 1.24	SCS 2.96	TYPE 0.6
Conception (SCR) N/A		HCR 0.2	CCR -1.0
CM\$ 305	Milking Speed 99		LIV -0.1
CE 2.9%	NM\$ 294	DPR 0.0	MOB 0.2





**DAM: HILLTOP ACRES S NUTELLA**  
3RD LACTATION 'E 91 E 92 MS'



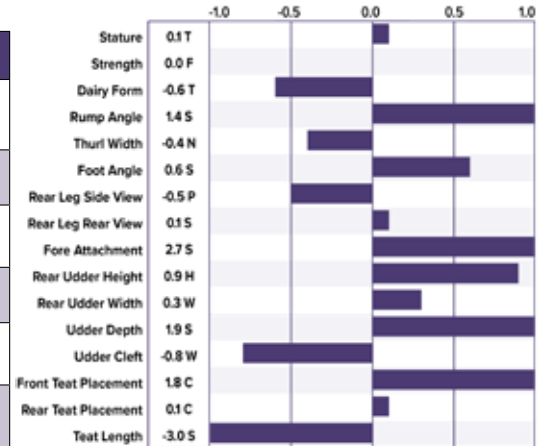
**DAM: HILLTOP ACRES S NUTELLA**  
3RD LACTATION 'E 91 E 92 MS'

## RASTAROKET X SILVER X PATTON

REG: 840003264521262 | aAa 234  
Kappa Casein: BB | Beta Cas: A2/A2

SIRE: RASTAROKET \*TM  
DAM: HILLTOP ACRES S NUTELLA 'E 91 E 92 MS'  
1-08 305D 3X 27,250 4.5 1,223 3.5 944  
2-08 365D 3X 39,061 4.9 1,902 4.0 1,575  
MGD: HILLTOP ACRES PAT NADINE 'V 87 V 87 MS'  
3-03 305D 3X 29,610 4.8 1,410 3.7 1,091  
4-02 365D 3X 35,074 4.8 1,692 3.6 1,259

12/24 G-CDCB PERFORMANCE			
MILK 511	FAT 40 / 0.09%	PROTEIN 45 / 0.14%	PPR 196
PROD. 62%R 0 DTRS/0 HRDS TYPE 65%R			
PL 5.3	UDC 1.07	SCS 2.78	TYPE 0.7
Conception (SCR) N/A		HCR 0.9	CCR 1.7
CM\$ 666	Milking Speed 100		LIV 2.7
CE 2.2%	NM\$ 645	DPR 1.3	MOB 0.3



**DAM: NOR-BERT SILVER JEM**  
2ND LACTATION 'V 86 V 86 MS'



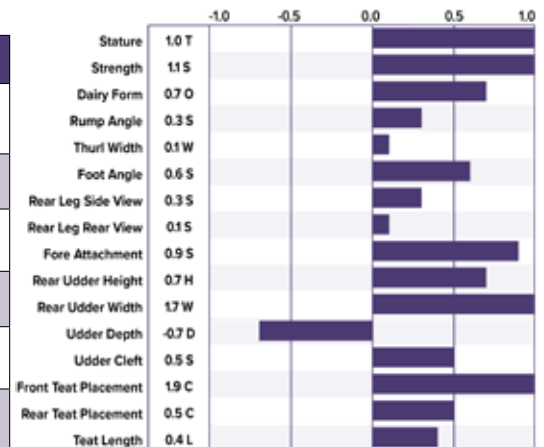
**DAM: NOR-BERT SILVER JEM**  
2ND LACTATION 'V 86 V 86 MS'

## JORDY \*NP X SILVER X BIVER

REG: 840003245156634 | aAa 432  
Kappa Casein: BB | Beta Cas: A2/A2

SIRE: TROUT HILLTOP JORDY \*NP ET  
DAM: NOR-BERT SILVER JEM 'V 86 V 86 MS'  
2-01 365D 3X 39,010 6.8 2,655 4.1 1,582  
3-04 337D 3X 42,130 6.4 2,684 3.7 1,568  
MGD: NOR-BERT BIVER JULY '2E 90 E 91 MS'  
2-01 365D 3X 41,540 6.5 2,709 3.9 1,634  
3-04 365D 3X 45,510 7.1 3,249 4.0 1,820  
4-11 365D 3X 45,920 7.1 3,255 3.8 1,745

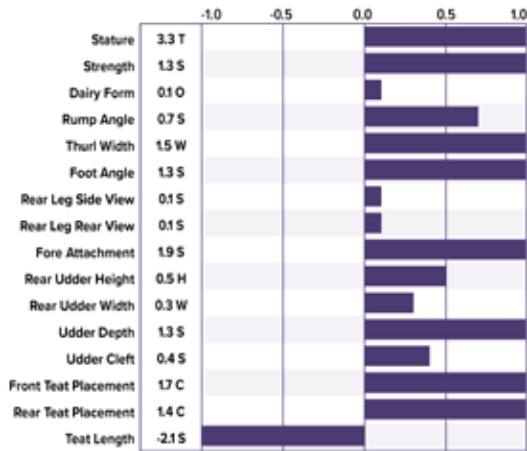
12/24 G-CDCB PERFORMANCE			
MILK 1270	FAT 51 / -0.01%	PROTEIN 54 / 0.05%	PPR 175
PROD. 67%R 0 DTRS/0 HRDS TYPE 68%R			
PL 2.3	UDC 1.03	SCS 3.07	TYPE 0.8
Conception (SCR) N/A		HCR 0.9	CCR 0.1
CM\$ 529	Milking Speed 102		LIV 0.2
CE 2.9%	NM\$ 522	DPR -0.2	MOB 0.0





**ALDO SG X ARROW X BLOOMING**

196BS57585 **ALPIN** \*TM



REG: BSCHE120159552549 | aAa 324165  
Kappa Casein: AB | Beta Cas: A2/A2 | BH14C

SIRE: **ALDO SG-ET**

DAM: **ARROW ANNIKA 'E 93 E 94 MS'**  
4-11 266D 2X 17,062 3.8 644 3.6 615  
5-11 305D 2X 20,955 4.3 906 3.9 811  
LIFETIME: 1,900D 110,013M 4,698F 4,273P

MGD: **BLOOMING BALI 'E 93 E 92 MS'**  
6-01 305D 2X 20,631 4.0 820 3.7 765  
7-02 305D 2X 20,499 4.0 814 3.6 734  
LIFETIME: 2,081D 124,477M 4,989F 4,506P

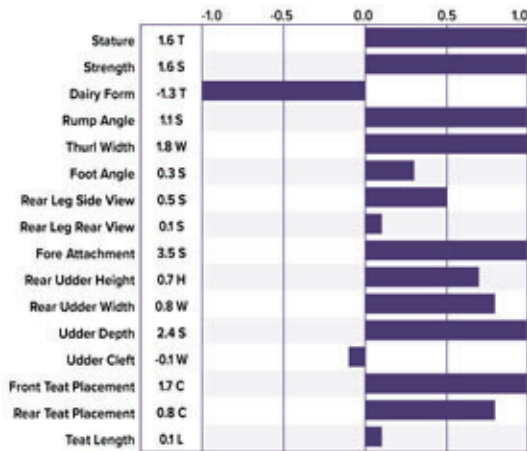


DAM: **ARROW ANNIKA**  
'E 93 E 94 MS'

12/24 G-IB-M/US PERFORMANCE			
MILK	FAT	PROTEIN	PPR
366	26 / 0.05%	32 / 0.10%	87
PROD. 63%R 0 DTRS/ 0 HRDS TYPE 65%R			
PL -3.1	UDC 1.00	SCS 3.23	TYPE 0.9
Conception (SCR) N/A		HCR 2.1	CCR -0.5
CM\$ 59	Milking Speed 98		LIV -0.6
CE 3.2%	NM\$ 52	DPR 0.3	MOB 0.1

**CALANO SG X VICTOR \*P X ANIBAL**

196BS57617 **HALANO** \*P \*TM



REG: BSCHE120162719137 | aAa 342516  
Kappa Casein: AB | Beta Cas: A2/A2

SIRE: **GOLD HILL NICE GP CALANO-SG ET**

DAM: **VICTOR HALLA \*P '+ 84 V 85 MS'**  
3-01 357D 2X 21,254 4.6 974 3.6 774  
4-03 346D 2X 21,678 4.4 913 3.5 712  
5-03 R.I.P 290D 2X 17,167 4.2 712 3.6 620

MGD: **ANIBAL HORBA 'E 90 V 88 MS'**  
6-09 305D 2X 21,857 3.8 836 3.5 754  
LIFETIME: 1,964D 118,503M 4,694F 4,217P



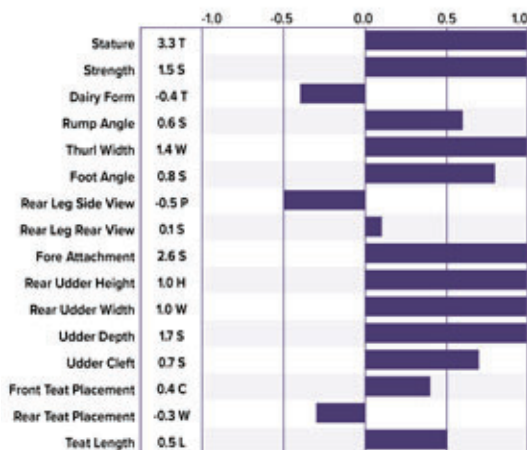
DAM: **VICTOR P HALLA**  
'+ 84 V 85 MS'

12/24 G-IB-M/US PERFORMANCE			
MILK	FAT	PROTEIN	PPR
551	11 / -0.06%	23 / 0.02%	157
PROD. 62%R 0 DTRS/ 0 HRDS TYPE 65%R			
PL 4.6	UDC 1.54	SCS 2.67	TYPE 0.7
Conception (SCR) 3.8		HCR 1.0	CCR 1.2
CM\$ 313	Milking Speed 102		LIV 2.3
CE 3.5%	NM\$ 303	DPR 3.5	MOB 0.2



**HUGE SG X CALVIN X BLOOMING**

196BS57758 H.U. HUSER'S **HUGE SG RAY** \*TM



REG: BSCHE120158520600 | aAa 423651  
Kappa Casein: BB | Beta Cas: A2/A2

SIRE: **GOLDHILL BENDER HUGE SG-ET**

DAM: **H.U. HUSER'S CALVIN ROMINA 'E 93 E 96 MS'**  
4-01 305D 2X 24,138 4.1 977 3.7 891  
5-04 305D 2X 25,532 3.9 1,001 3.5 900  
LIFETIME: 1,274D 90,451M 3,574F 3,300P

MGD: **H.U. HUSER'S BLOOMING RONJA 'E 93 E 96 MS'**  
3-11 305D 2X 25,267 4.0 1,003 3.5 877  
5-03 305D 2X 25,935 3.7 953 3.3 849  
LIFETIME: 1,541D 118,457M 4,456F 4,145P



DAM: **H. U. HUSER'S CALVIN ROMINA**  
4TH LACTATION 'E 93 E 96 MS'

12/24 G-IB-M/US PERFORMANCE			
MILK	FAT	PROTEIN	PPR
921	18 / -0.10%	29 / -0.01%	75
PROD. 63%R 0 DTRS/ 0 HRDS TYPE 66%R			
PL -0.1	UDC 1.43	SCS 3.08	TYPE 0.7
Conception (SCR) N/A		HCR -0.8	CCR -2.0
CM\$ 80	Milking Speed 104		LIV -1.2
CE 3.4%	NM\$ 81	DPR -1.6	MOB 0.4



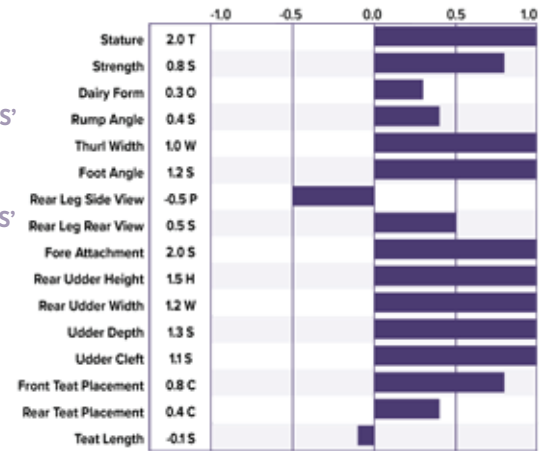
**CUTTING EDGE T THYME**

1ST PLACE SPRING CALF  
NORTHEAST NATIONAL 2024  
2ND PLACE SPRING CALF  
WORLD DAIRY EXPO 2024  
OWNED BY KAELYN TOMPKINS, CONNECTICUT

REG: 68210495 | aAa 213  
Kappa Casein: BB | Beta Cas: A2/A2 | BH14C

SIRE: **HILLTOP ACRES DYNAMITE DIEGO ET \*TM**  
DAM: **JENNINGS GAP WATCHOUT TAHITI 'V 87 V 87 MS'**  
2-00 305D 2X 17,720 4.0 706 3.2 575  
3-01 345D 2X 19,570 4.7 928 3.5 678  
4-03 365D 2X 25,630 4.5 1,159 3.4 882  
MGD: **JENNINGS GAP CARTER THREAD '2E 90 V 89 MS'**  
3-09 273D 2X 16,220 4.4 708 3.4 550  
4-11 250D 2X 17,300 4.1 714 3.2 549

12/24 G-IB-M/US PERFORMANCE			
MILK	FAT	PROTEIN	PPR
552	8 / -0.07%	14 / -0.02%	73
PROD. 75%R 10 DTRS/ 8 HRDS TYPE 71%R			
PL 2.1	UDC 1.54	SCS 2.87	TYPE 1.1
Conception (SCR) -2.4		HCR 0.6	CCR -1.3
CM\$ 154	Milking Speed 105		LIV 0.2
CE 2.2%	NM\$ 152	DPR -0.4	MOB 0.5

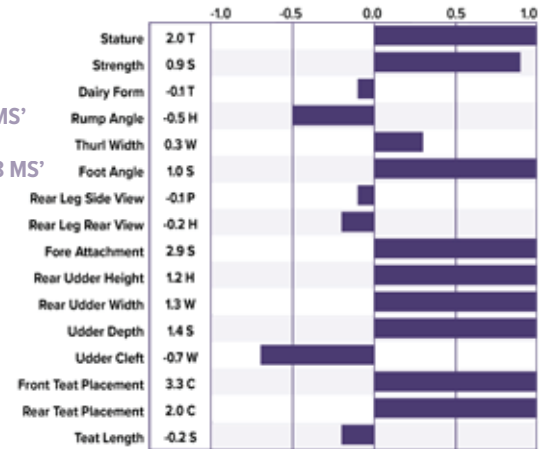


DAM: **JOLAHOFS DREAMER CALIDA ET**  
+ 84 V 85 MS'

REG: 840003264521202 | aAa 213  
Kappa Casein: BB | Beta Cas: A2/A2

SIRE: **SCHERMA DREAMER BINIAM**  
DAM: **JOLAHOFS DREAMER CALIDA ET '+ 84 V 85 MS'**  
2-05 305D 2X 22,677 3.7 849 3.4 772  
MGD: **GOLDHILL BENDER CALANA SG ET '+ 84 V 88 MS'**  
2-07 305D 2X 22,359 3.9 864 3.6 802

12/24 G-IB-M/US PERFORMANCE			
MILK	FAT	PROTEIN	PPR
472	31 / 0.06%	36 / 0.10%	133
PROD. 60%R N/A DTRS/ N/A HRDS TYPE 63%R			
PL 0.8	UDC 1.56	SCS 2.97	TYPE 0.6
Conception (SCR) N/A		HCR 0.1	CCR -0.7
CM\$ 318	Milking Speed 102		LIV 0.7
CE 2.2%	NM\$ 305	DPR 0.2	MOB 0.0



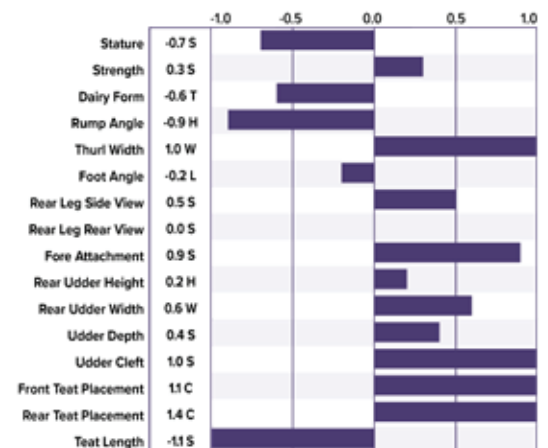
**BROTHERS THREE TV WYNONA ETV**

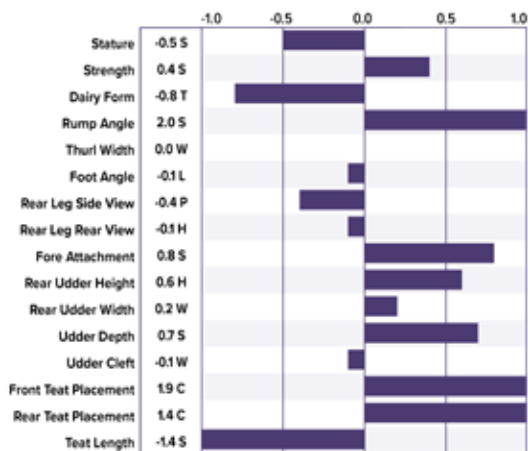
RESERVE JUNIOR CHAMPION  
ALL AMERICAN SHOW 2024  
OWNED BY WYNONNA SYNDICATE,  
MARYLAND & VIRGINIA

REG: 68211219 | aAa 246  
Kappa Casein: BB | Beta Cas: A1/A1

SIRE: **VETSCHS NESTA CALVIN ET**  
DAM: **CUTTING EDGE T DELILAH '2E 95 E 95 MS'**  
SUPREME CHAMPION WDE 2018 & 2019  
LIFETIME: 1,743D 114,130M 5,495F 4,250P  
MGD: **TOWPATH AGENDA DANCER '2E 92 E 93 MS'**  
HM ALL AMERICAN 2010 & NOM. AA 2009  
LIFETIME: 1,930D 109,460M 4,903F 4,243P

12/24 G-IB-M/US PERFORMANCE			
MILK	FAT	PROTEIN	PPR
-358	-9 / 0.03%	-5 / 0.04%	46
PROD. 67%R N/A DTRS/ N/A HRDS TYPE 68%R			
PL 2.3	UDC 0.78	SCS 2.94	TYPE 0.2
Conception (SCR) N/A		HCR -0.5	CCR 0.6
CM\$ 70	Milking Speed 98		LIV 3.8
CE 3.1%	NM\$ 65	DPR 2.4	MOB 0.2





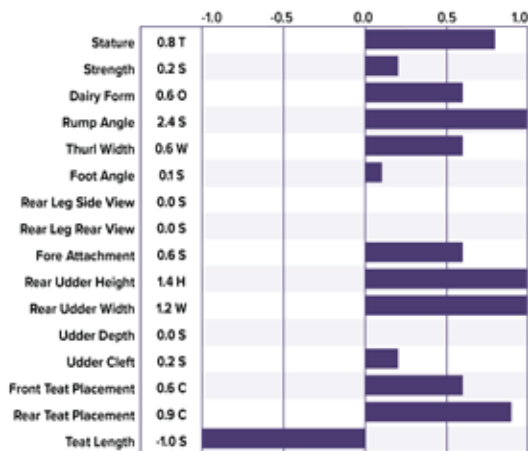
REG: 840003232308577 | aAa 612  
Kappa Casein: BB | Beta Cas: A2/A2

SIRE: PORTMANN BS BAYS JONMAR  
DAM: HILLTOP ACRES S NUTELLA 'E 91 E 92 MS'  
1-08 305D 3X 27,250 4.5 1,223 3.5 944  
2-08 365D 3X 39,061 4.9 1,902 4.0 1,575  
MGD: HILLTOP ACRES PAT NADINE 'V 87 V 87 MS'  
3-03 305D 3X 29,610 4.8 1,410 3.7 1,091  
4-02 365D 3X 35,074 4.8 1,692 3.6 1,259



DAM: HILLTOP ACRES S NUTELLA  
3RD LACTATION 'E 91 E 92 MS'

12/24 G-IB-M/US PERFORMANCE			
MILK	FAT	PROTEIN	PPR
966	54 / 0.07%	53 / 0.10%	195
PROD. 68%R N/A DTRS/ N/A HRDS TYPE 71%R			
PL 2.5	UDC 0.60	SCS 2.96	TYPE 0.5
Conception (SCR) 0.5		HCR 0.4	CCR 1.2
CM\$ 596	Milking Speed 98		LIV 0.6
CE 2.4%	NM\$ 582	DPR 1.5	MOB 0.0



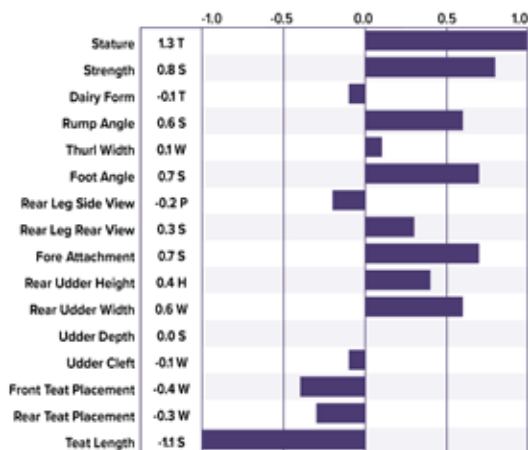
REG: 840003239490072 | aAa 246  
Kappa Casein: BB | Beta Cas: A2/A2

SIRE: PORTMANN BS BAYS JONMAR  
DAM: HILLTOP ACRES PRINCESS ETV 'E 91 E 91 MS'  
1-11 305D 3X 24,560 4.8 1,173 3.6 879  
2-11 365D 3X 44,163 5.7 2,525 3.8 1,696  
MGD: HILLTOP ACRES CAD PAULA 'V 87 V 87 MS'  
1-11 365D 3X 32,990 4.6 1,522 3.8 1,257  
7-03 365D 3X 38,860 4.8 1,878 3.7 1,433



TCC PERFECT MELODY  
2ND PLACE WINTER CALF  
SOUTHWESTERN NATIONAL 2024  
OWNED BY BROOKE BAUER, MINNESOTA

12/24 G-IB-M/US PERFORMANCE			
MILK	FAT	PROTEIN	PPR
1037	51 / 0.04%	47 / 0.05%	159
PROD. 68%R N/A DTRS/ N/A HRDS TYPE 70%R			
PL 2.9	UDC 0.85	SCS 2.93	TYPE 0.6
Conception (SCR) -10.1		HCR 1.2	CCR -0.5
CM\$ 569	Milking Speed 104		LIV 2.2
CE 2.4%	NM\$ 559	DPR -1.6	MOB 0.3



REG: 840003250042668 | aAa 423  
Kappa Casein: BB | Beta Cas: A2/A2

SIRE: PACTOLE  
DAM: KULP-TERRA CASANDRA ET '2E 93 E 94 MS'  
2-09 365D 2X 24,743 4.2 1,069 3.6 896  
4-00 365D 2X 27,873 4.9 1,367 3.7 1,038  
5-05 365D 2X 25,625 5.4 1,373 3.5 905  
MGD: VOELKERS BROOK CARA '3E 92 E 90 MS'  
10-05 365D 2X 44,530 4.8 2,142 3.5 1,547  
LIFETIME: 2,471D 242,309M 12,036F 8,967P



DAM: KULP-TERRA CASANDRA ET  
4TH LACTATION '2E 93 E 94 MS'

12/24 G-IB-M/US PERFORMANCE			
MILK	FAT	PROTEIN	PPR
744	48 / 0.08%	42 / 0.08%	194
PROD. 67%R N/A DTRS/ N/A HRDS TYPE 68%R			
PL 3.9	UDC 0.34	SCS 2.68	TYPE 0.5
Conception (SCR) N/A		HCR 0.3	CCR 1.4
CM\$ 579	Milking Speed 109		LIV 1.1
CE 2.9%	NM\$ 562	DPR 2.4	MOB 0.4

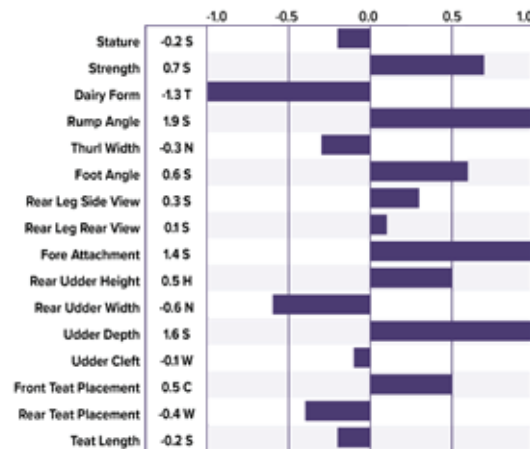




MGD: SUN-MADE WHISKEY TEA ET  
E 90 E 92 MS'

REG: 68217549 | aAa 423  
Kappa Casein: BB | Beta Cas: A2/A2  
SIRE: PORTMANN BS BAYS JONMAR  
DAM: V B HP FACT TEA POT-ET 'V 88 V 88 MS'  
5-03 261D 2X 15,180 4.1 619 3.2 482  
6-02 305D 2X 25,393 3.5 896 3.3 831  
MGD: SUN-MADE WHISKEY TEA 'E 90 E 92 MS'  
2-02 365D 2X 25,870 4.3 1,121 3.4 881

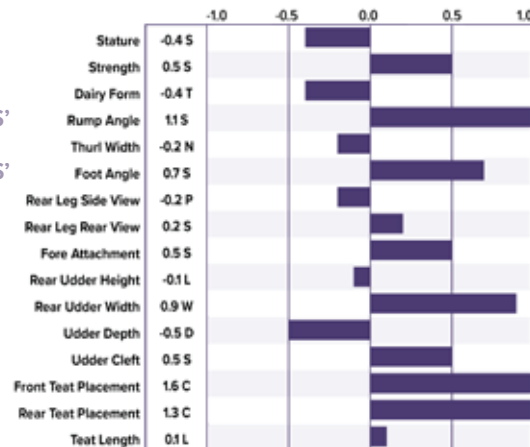
12/24 G-IB-M/US PERFORMANCE			
MILK	FAT	PROTEIN	PPR
919	20 / -0.09%	31 / 0.00%	144
PROD. 68%R N/A DTRS/ N/A HRDS TYPE 70%R			
PL 4.9	UDC 0.45	SCS 2.88	TYPE 0.2
Conception (SCR) -1.0		HCR -0.1	CCR -1.8
CM\$ 435	Milking Speed 102		LIV 3.8
CE 2.6%	NM\$ 431	DPR 1.9	MOB 0.2



DAM: SANTIAM SILVER SWEETNESS P  
2ND LACTATION '+ 84 + 84 MS'

REG: 840003259994822 | aAa 432  
Kappa Casein: BB | Beta Cas: A1/A2 | BH14C  
SIRE: TROUT HILLTOP JORDY \*NP ET  
DAM: SANTIAM SILVER SWEETNESS P '+ 84 + 84 MS'  
2-00 365D 3X 19,670 4.3 852 3.4 667  
MGD: WIL-RENE JAY P SWEETPEA NP 'V 86 V 85 MS'  
5-05 365D 3X 26,210 4.1 1,080 3.2 848  
LIFETIME: 1,734D 122,800M 5,172F 4,135P

12/24 G-IB-M/US PERFORMANCE			
MILK	FAT	PROTEIN	PPR
452	33 / 0.07%	31 / 0.08%	119
PROD. 65%R N/A DTRS/ N/A HRDS TYPE 67%R			
PL 1.5	UDC 0.55	SCS 3.06	TYPE 0.2
Conception (SCR) N/A		HCR 2.7	CCR 1.9
CM\$ 355	Milking Speed 98		LIV 0.4
CE 2.7%	NM\$ 346	DPR 1.0	MOB 0.1

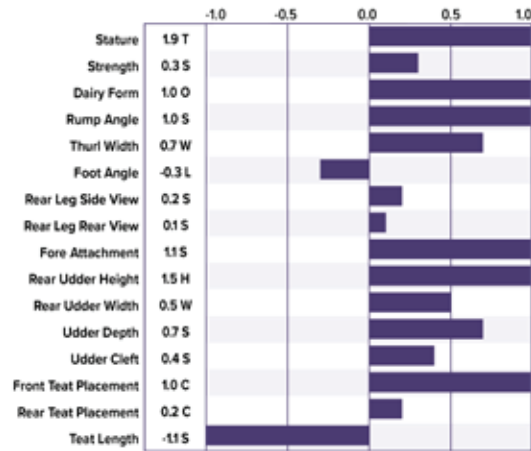


The US Brown Swiss Breeders Association recently identified BH14, a haplotype linked to early pregnancy loss, with the earliest known carrier being VENTURES ESP BABARAY (W), born in 1978. Over 6% of the US population now carries BH14. New Generation Genetics will help customers manage this risk by clearly marking carrier bulls with "BH14C" and advising careful mating to avoid pairing two carriers. We strongly encourage all breeders to use genomic testing to identify carriers within their herds, helping to minimize the risk of pregnancy loss

DISCLAIMER OF WARRANTY AND LIMITATION OF LIABILITY

Availability of all semen is subject to change without notice. Semen is collected, processed and stored in accordance with sound recognized practices. Neither New Generation Genetics, Inc. (NGG) nor owners of bulls leased to NGG nor its employees or agents shall be liable after delivery for any injury or disease caused to any persons, animals or property through the use or handling of the semen. NGG does not guarantee semen to be free of genetic recessives. NGG does not guarantee the fertility capacity of any semen. No warranty of any kind is inferred except to sell and convey good title. Any other warranty is hereby disclaimed. Should a breach of any NGG warranty be deemed by applicable court of law, the purchaser's exclusive remedy shall be limited to replacement of semen or refund of payment at NGG's option and NGG shall not be liable for any consequential or additional damages or expenses.

G- Indicates Genomic Enhanced Evaluation



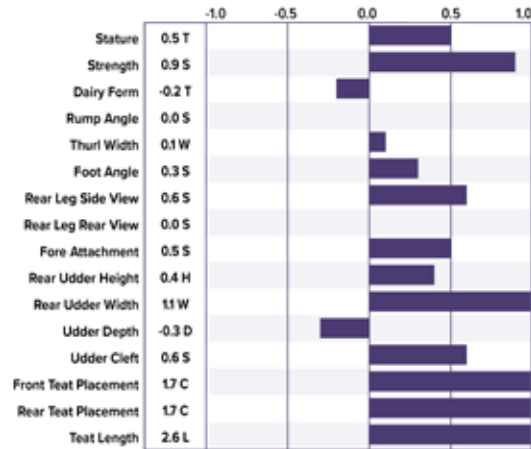
REG: 68182661 | aAa 231  
Kappa Casein: BB | Beta Cas: A2/A2

SIRE: **SCHERMA BLOOMING BIVER ET**  
DAM: **SUN-MADE HP SUPRME PIXEL ET '2E 94 E 94 MS'**  
3-05 365D 2X 39,150 4.7 1,830 3.4 1,324  
5-07 365D 2X 32,940 5.5 1,808 3.4 1,122  
7-02 365D 2X 28,460 6.0 1,700 3.5 991  
LIFETIME: 1,954D 176,480M 9,147F 6,280P  
MGD: **TRIANGLE ACRES POST IT TWIN 'E 90 V 89 MS'**  
3-04 365D 2X 30,170 4.5 1,366 3.5 1,070  
2-04 305D 2X 20,070 4.3 873 3.5 707



**V B PHANTOM SINISTER**  
2ND PLACE SENIOR 3 YEAR OLD  
WORLD DAIRY EXPO 2024  
OWNED BY VOEGELI FARMS, WISCONSIN

12/24 G-IB-M/US PERFORMANCE			
MILK	FAT	PROTEIN	PPR
686	36 / 0.04%	41 / 0.09%	126
PROD. 95%R 161 DTRS/ 64 HRDS TYPE 93%R			
PL 3.1	UDC 0.95	SCS 3.10	TYPE 0.8
Conception (SCR) 0.9		HCR 0.3	CCR -2.0
CM\$ 456	Milking Speed 105		LIV 2.1
CE 2.6%	NM\$ 446	DPR -1.7	MOB 0.1



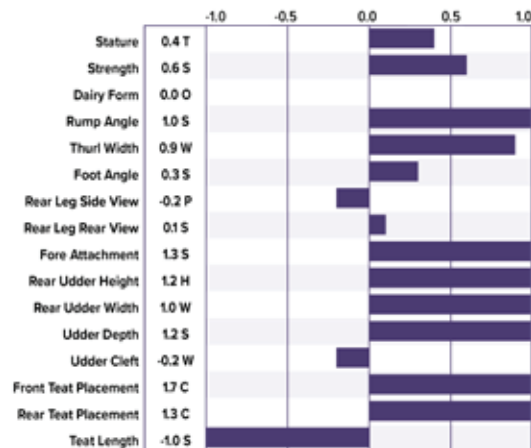
REG: 840003215414562 | aAa 324  
Kappa Casein: BB | Beta Cas: A2/A2

SIRE: **VICTOR P ET \*TM**  
DAM: **TROUT RUN JAN P ET 'E 90 E 91 MS'**  
7-06 305D 3X 35,942 4.5 1,617 3.5 1,262  
8-07 365D 3X 34,639 4.5 1,574 3.8 1,313  
LIFETIME: 2,729D 255,200M 12,491F 9,765P  
MGD: **TROUT RUN JILL P ET 'V 85 V 86 MS'**  
4-00 305D 2X 19,210 4.8 922 3.3 631  
3-03 305D 2X 18,140 4.8 871 3.4 616



**LA RAINBOW JORDY SORAYA P**  
1ST PLACE JUNIOR 2 YEAR OLD  
OHIO STATE FAIR 2024  
OWNED BY LA RAINBOW FARM, OHIO

12/24 G-IB-M/US PERFORMANCE			
MILK	FAT	PROTEIN	PPR
877	39 / 0.01%	39 / 0.04%	120
PROD. 89%R 66 DTRS/ 34 HRDS TYPE 80%R			
PL 0.2	UDC 0.76	SCS 3.08	TYPE 0.4
Conception (SCR) -0.8		HCR 1.7	CCR 1.3
CM\$ 316	Milking Speed 102		LIV -0.3
CE 3.5%	NM\$ 310	DPR -0.3	MOB 0.0



REG: 840003200520226 | aAa 165  
Kappa Casein: BB | Beta Cas: A2/A2

SIRE: **DOUBLE W KADE \*NP \*TM**  
DAM: **LA RAINBOW SWEET SIESTA ET 'E 90 E 91 MS'**  
1-10 305D 2X 18,950 4.4 833 3.3 630  
2-09 305D 2X 21,290 4.1 882 3.5 737  
MGD: **LA RAINBOW SWEET SILK ETV 'E 91 E 91 MS'**  
1-09 365D 2X 26,240 5.0 1,321 3.9 1,025  
3-07 365D 2X 26,890 5.3 1,425 3.5 929



**MAYERS SPARK VICTORIA \*NP**  
HONORABLE MENTION INTERMEDIATE  
CHAMPION WORLD DAIRY EXPO 2024  
OWNED BY DEVIN & KAYLA MAYER AND GREG  
CHRISTIANSON, WISCONSIN

12/24 G-IB-M/US PERFORMANCE			
MILK	FAT	PROTEIN	PPR
527	-3 / -0.12%	16 / -0.01%	21
PROD. 90%R 74 DTRS/ 32 HRDS TYPE 83%R			
PL 0.1	UDC 1.06	SCS 2.99	TYPE 0.7
Conception (SCR) N/A		HCR 0.0	CCR -2.0
CM\$ 10	Milking Speed 108		LIV -1.1
CE 2.0%	NM\$ 9	DPR -2.2	MOB 0.3

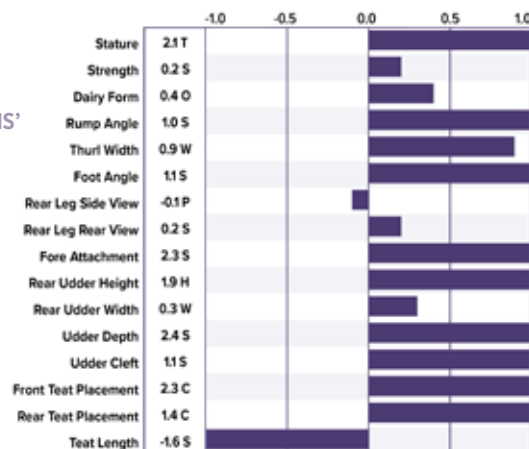


**JENLAR DIEGO WATERLOO ETV**

1ST PLACE YEARLING IN MILK  
WORLD DAIRY EXPO 2024  
OWNED BY BRIANNA MEYER, WISCONSIN

REG: 68194906 | aAa 423  
Kappa Casein: BB | Beta Cas: A2/A2  
SIRE: **LA RAINBOW BFLY DYNAMITE ETV**  
DAM: **HILLTOP ACRES GLN DIGNITY ET 'E 90 V 88 MS'**  
1-09 305D 3X 24,640 4.2 1,025 3.5 859  
4-02 305D 3X 30,960 4.6 1,435 3.6 1,121  
5-04 326D 3X 28,470 4.6 1,322 3.6 1,037  
MGD: **HILLTOP ACRES V DIVINITY '2E 91 E 92 MS'**  
4-04 365D 3X 30,520 4.4 1,331 3.7 1,136  
LIFETIME: 2,046D 142,460M 6,481F 5,577P

12/24 G-IB-M/US PERFORMANCE			
MILK	FAT	PROTEIN	PPR
16	-12 / -0.06%	11 / 0.05%	38
PROD. 94%R 199 DTRS/100 HRDS TYPE 92%R			
PL 1.4	UDC 1.71	SCS 2.82	TYPE 1.0
Conception (SCR) -2.7		HCR 0.2	CCR -1.3
CM\$ 87	Milking Speed 103		LIV 2.0
CE 2.4%	NM\$ 77	DPR -1.9	MOB 0.6

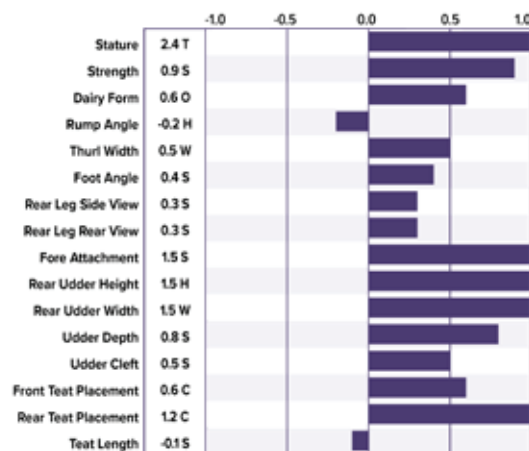


**TERRA ROSE CLIFF SHASTA**

GRAND & SENIOR CHAMPION NAILE 2024  
OWNED BY ADELE BIASINI, VERMONT

REG: 840003143858205 | aAa 243  
Kappa Casein: BB | Beta Cas: A1/A2  
SIRE: **HILLTOP ACRES B DAREDEVIL ET \*TM**  
DAM: **VOELKERS BROOK CARA '3E 92 E 90 MS'**  
6-05 365D 2X 46,569 4.6 2,136 3.5 1,613  
8-02 365D 2X 49,950 5.1 2,531 3.5 1,766  
10-05 365D 2X 44,530 4.8 2,142 3.5 1,547  
LIFETIME: 2,471D 242,309M 12,036F 8,967P  
MGD: **VOELKERS WNDRNT CARABELLA 'E 90 V 88 MS'**  
4-05 365D 2X 32,300 4.2 1,368 3.4 1,106

12/24 G-IB-M/US PERFORMANCE			
MILK	FAT	PROTEIN	PPR
487	-2 / -0.11%	31 / 0.07%	45
PROD. 90%R 83 DTRS/53 HRDS TYPE 88%R			
PL -0.5	UDC 1.30	SCS 3.13	TYPE 1.3
Conception (SCR) -1.4		HCR -1.8	CCR -2.3
CM\$ 34	Milking Speed 105		LIV -2.5
CE 2.2%	NM\$ 27	DPR -2.1	MOB 0.4



**1TYPE**

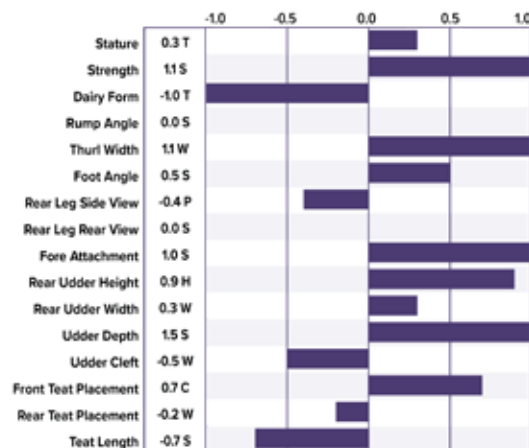


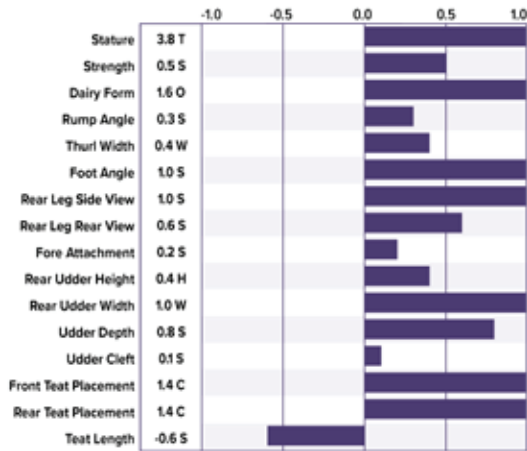
**BROWN HEAVEN KADE FRIEND**

1ST PLACE SENIOR 3 YEAR OLD  
WORLD DAIRY EXPO 2024  
OWNED BY BROWN HEAVEN, QUEBEC, CANADA

REG: 68186608 | aAa 432  
Kappa Casein: BB | Beta Cas: A2/A2  
SIRE: **TROUT RUN DR JAY P \*TM (D)**  
DAM: **DOUBLE W THUNDER KADDIE 'V 88 V 88 MS'**  
2-01 365D 3X 21,390 4.9 1,058 3.4 732  
3-00 277D 3X 19,360 4.3 830 3.4 663  
MGD: **DOUBLE W FAUST KWIK ''**  
2-00 278D 3X 16,400 4.6 751 3.4 555  
3-00 326D 3X 21,420 4.9 1,049 3.4 728

12/24 G-IB-M/US PERFORMANCE			
MILK	FAT	PROTEIN	PPR
471	27 / 0.04%	28 / 0.06%	126
PROD. 97%R 368 DTRS/96 HRDS TYPE 96%R			
PL 3.8	UDC 0.61	SCS 2.81	TYPE 0.2
Conception (SCR) -2.5		HCR 0.9	CCR 1.1
CM\$ 374	Milking Speed 101		LIV 2.6
CE 2.1%	NM\$ 363	DPR 0.7	MOB -0.1





REG: 68119645 | aAa 132546  
Kappa Casein: AB | Beta Cas: A1/A2

SIRE: **WEBSTER RIDGE TD ET \*™™**  
DAM: **VOELKERS WNDRNT CARABELLA**  
‘E 90 V 88 MS’

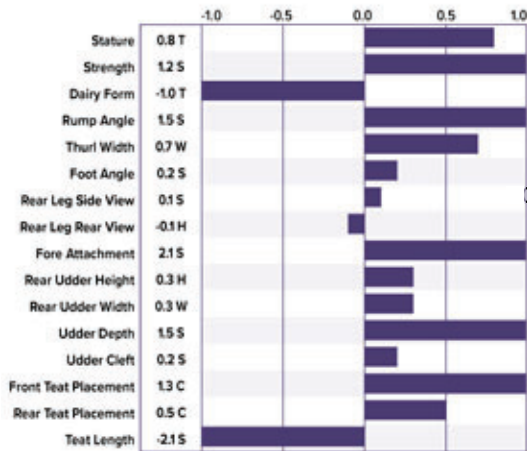
2-03 364D 2X 20,600 4.7 972 3.6 640  
3-04 334D 2X 22,510 4.2 951 3.3 741  
4-05 365D 2X 32,300 4.2 1,368 3.4 1,106

MGD: **VOELKERS MIGEL CANDID ‘4E 94 E 95 MS’**  
ALL-AMERICAN 5-YEAR OLD 2009  
LIFETIME: 3,186D 222,610M 9,947F 7,389P



**BROWN HEAVEN CARTER TUTTI**  
RESERVE GRAND & RES. SENIOR CHAMPION  
WORLD DAIRY EXPO 2024  
OWNED BY BRIAN PACHECO, CALIFORNIA

12/24 G-IB-M/US PERFORMANCE			
MILK	FAT	PROTEIN	PPR
1006	22 / -0.10%	19 / -0.08%	17
PROD. 99%R 1516 DTRS/ 538 HRDS TYPE 99%R			
PL -0.7	UDC 0.65	SCS 3.07	TYPE 0.8
Conception (SCR) -3.4		HCR -5.6	CCR -6.2
CM\$ 33	Milking Speed 98		LIV -2.2
CE 2.8%	NM\$ 40	DPR -4.1	MOB 0.6



REG: BSCAN00011164959 | aAa 354  
Kappa Casein: AB | Beta Cas: A2/A2

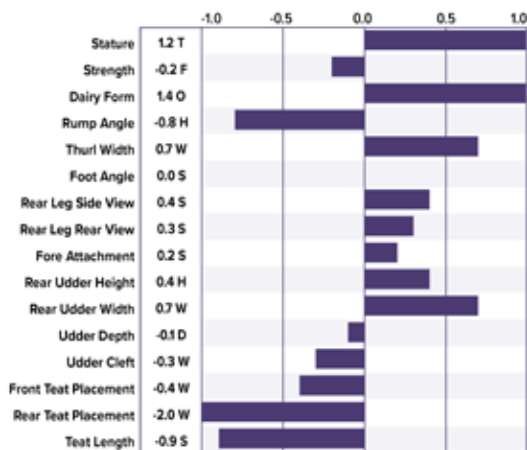
SIRE: **VETSCHS NESTA CALVIN ET**  
DAM: **BROWN HEAVEN J FANCY ET ‘2E 91 E 94 MS’**  
NOMINATED ALL-AMERICAN YRLG IN MILK 2015  
4-10 365D 2X 35,470 4.9 1,753 3.6 1,276

GD: **BROWN HEAVEN GLENN FANTASY ‘E 97 E 97 MS’**  
GRAND CHAMPION WORLD DAIRY EXPO 2015 & 2016  
5-11 365D 2X 35,556 4.7 1,568 3.4 1,208



**JENLAR FC WHIPSAW ETV**  
3RD PLACE JUNIOR 2 YEAR OLD  
WORLD DAIRY EXPO 2024  
OWNED BY IROQUOIS ACRES, VERMONT

12/24 G-IB-M/US PERFORMANCE			
MILK	FAT	PROTEIN	PPR
-270	-10 / 0.01%	-6 / 0.02%	-18
PROD. 89%R 71 DTRS/ 37 HRDS TYPE 83%R			
PL -0.4	UDC 0.95	SCS 3.02	TYPE 0.3
Conception (SCR) 0.5		HCR -0.1	CCR -1.8
CM\$ -171	Milking Speed 99		LIV 0.5
CE 3.1%	NM\$ -172	DPR -1.2	MOB 0.1



REG: 68201687 | aAa 324  
Kappa Casein: BB | Beta Cas: A2/A2

SIRE: **SHILOH BROOKINGS CADENCE ET \*™™**  
DAM: **TOP ACRES SUPREME WIZARD ET**  
‘2E 95 E 94 MS’

GRAND CHAMPION WORLD DAIRY EXPO 2017,  
ALL-AMERICAN ‘13 & ‘17: RES ALL AMERICAN ‘12, ‘15, ‘16  
LIFETIME: 2,557D 202,535M 11,043F 7,077P

MGD: **TOP ACRES ANDRE WHISPER ET ‘2E 93 93 MS’**  
NOMINATED ALL AMERICAN 2005  
5-07 365D 2X 32,941 5.8 1,921 3.6 1,174



**EMPIRE WINRITE LOTUS**  
ALL AMERICAN JUNIOR 2 YEAR OLD 2023  
OWNED BY DYLAN FRY, MARYLAND

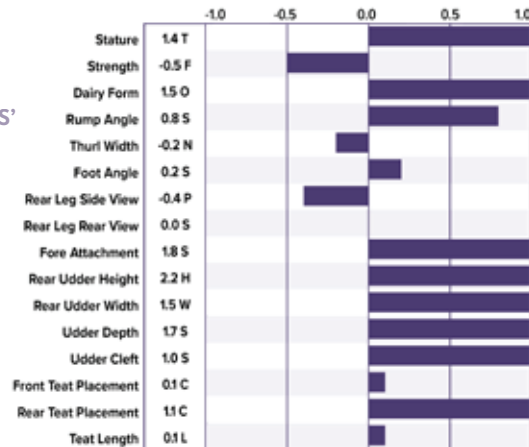
12/24 G-IB-M/US PERFORMANCE			
MILK	FAT	PROTEIN	PPR
493	6 / -0.07%	16 / 0.00%	42
PROD. 87%R 47 DTRS/ 34 HRDS TYPE 84%R			
PL 1.6	UDC 0.20	SCS 2.91	TYPE 0.5
Conception (SCR) 1.8		HCR 0.9	CCR -0.6
CM\$ 168	Milking Speed 108		LIV 0.3
CE 2.9%	NM\$ 166	DPR -1.1	MOB 0.4



**PIT-CREW DAREDEVIL SHAY**  
 INTERMEDIATE CHAMPION  
 WORLD DAIRY EXPO 2024  
 OWNED BY PIT-CREW GENETICS, MINNESOTA

REG: 840003012559129 | aAa 261  
 Kappa Casein: BB | Beta Cas: A2/A2  
 SIRE: **SHILOH JACKSON BRADY ET \*TM**  
 DAM: **HILLTOP ACRES BOSE DIXILAND 'E 93 E 93 MS'**  
 5-11 365D 3X 45,482 5.2 2,353 3.5 1,605  
 7-00 327D 3X 37,369 6.0 2,259 3.6 1,341  
 8-01 365D 3X 44,160 5.4 2,391 3.6 1,585  
 LIFETIME: 2,543D 275,410M 14,359F 10,089P  
 MGD: **HILLTOP ACRES GLN DIGNITY ET 'E 90 V 88 MS'**  
 LIFETIME: 1,289D 104,311M 4,878F 3,800P

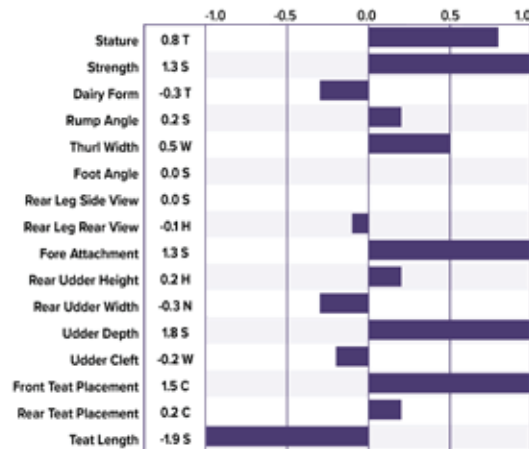
12/24 G-IB-M/US PERFORMANCE			
MILK	FAT	PROTEIN	PPR
383	-16 / -0.16%	8 / -0.03%	-32
PROD. 99%R 1388 DTRS/ 634 HRDS TYPE 98%R			
PL 0.3	UDC 1.67	SCS 3.28	TYPE 0.8
Conception (SCR) -2.0		HCR 0.0	CCR -2.9
CM\$ -55	Milking Speed 104		LIV -3.1
CE 2.6%	NM\$ -47	DPR -3.9	MOB 0.3



**TOPP-VIEW SEXY FORMULA**  
 RESERVE GRAND & RES. SENIOR CHAMPION  
 ALL AMERICAN SHOW 2024  
 OWNED BY PHILLIP TOPP, OHIO

REG: BSCAN000107362998 | aAa 351  
 Kappa Casein: AB | Beta Cas: A2/A2  
 SIRE: **JOLAHOFS POLO JONGLEUR ET \*TM**  
 DAM: **BROWN HEAVEN GLENN FANTASY 'E 97 E 97 MS'**  
 GRAND CHAMPION WORLD DAIRY EXPO 2015 & 2016  
 5-11 365D 2X 35,556 4.7 1,568 3.4 1,208  
 MGD: **SWISS DREAM AGENDA FAITH ET 'E 90 E 90 MS'**  
 5-02 365D 2X 24,998 4.3 1,071 3.6 899

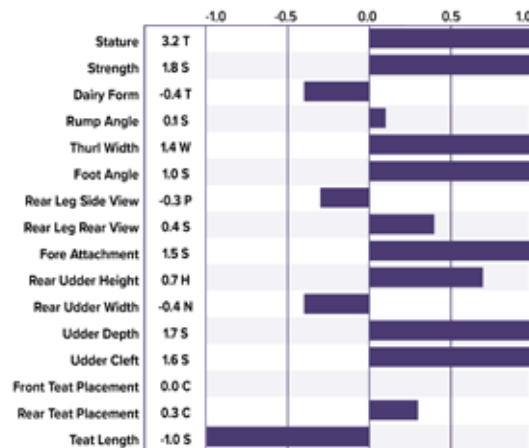
12/24 G-IB-M/US PERFORMANCE			
MILK	FAT	PROTEIN	PPR
-471	-22 / -0.01%	-17 / 0.00%	-75
PROD. 97%R 510 DTRS/ 288 HRDS TYPE 96%R			
PL -1.2	UDC 0.55	SCS 3.09	TYPE 0.4
Conception (SCR) N/A		HCR -0.6	CCR -2.6
CM\$ -344	Milking Speed 102		LIV -1.2
CE 3.2%	NM\$ -341	DPR -1.6	MOB -0.2



**JENLAR RASTA WESTLYNN ETV**  
 JUNIOR CHAMPION WORLD DAIRY EXPO  
 2023 & 2024  
 OWNED BY SIEMERS HOLSTEINS, WISCONSIN

REG: 840003135087427 | aAa 342  
 Kappa Casein: BB | Beta Cas: A2/A2  
 SIRE: **SCHAUMAUN BS GORDON GLENN ET \*TM**  
 DAM: **JO-DEE NEMO RISKY '2E 94 E 94 MS'**  
 RESERVE ALL AMERICAN 2014, HONORABLE  
 MENTION ALL AMERICAN '12, '13 & '16  
 LIFETIME: 1,968D 143,950M 5,288F 4,644P  
 MGD: **JO-DEE ENSIGN ROSEBUD '2E 93 E 92 MS'**  
 ALL-AMERICAN 2013 & 2X HM ALL AMERICAN  
 LIFETIME: 2,700D 194,640M 6,920F 6,359P

12/24 G-IB-M/US PERFORMANCE			
MILK	FAT	PROTEIN	PPR
-222	-25 / -0.08%	-4 / 0.02%	-38
PROD. 96%R 253 DTRS/ 114 HRDS TYPE 94%R			
PL 0.3	UDC 0.91	SCS 3.13	TYPE 0.7
Conception (SCR) N/A		HCR -0.7	CCR -4.1
CM\$ -262	Milking Speed 104		LIV 1.9
CE 2.5%	NM\$ -261	DPR -2.2	MOB 0.1





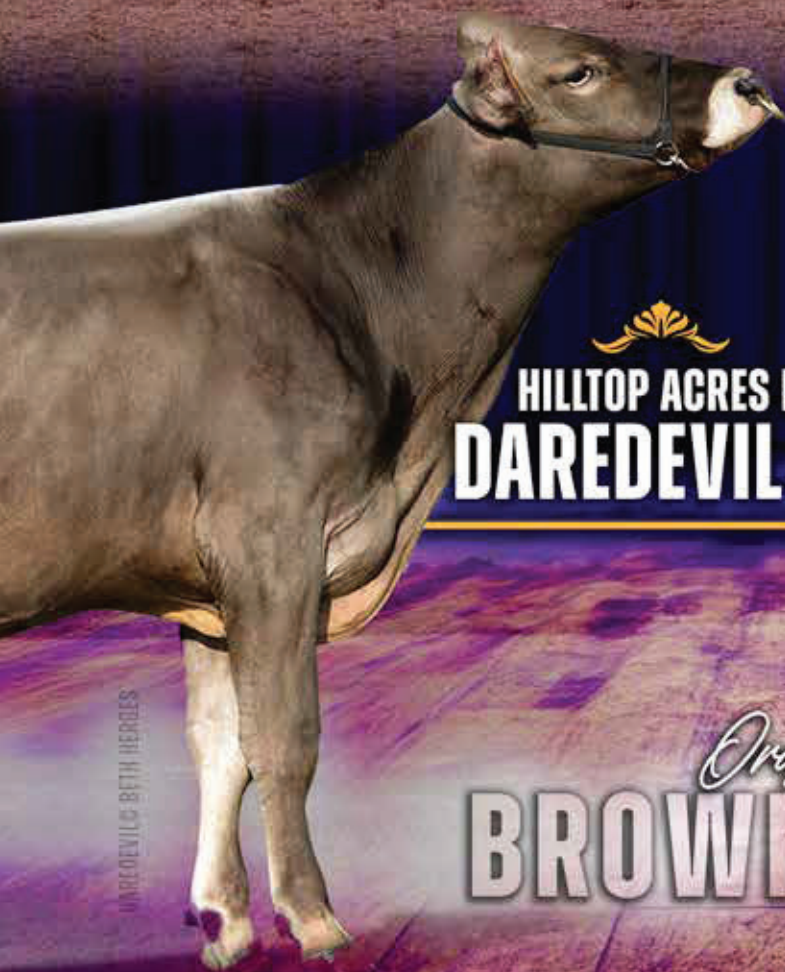
NEW GENERATION  
GENETICS

# Daredevil

PREMIER SIRE OF THE 2024 WORLD DAIRY EXPO  
BROWN SWISS COW SHOW



INTERMEDIATE CHAMPIONS AT WORLD DAIRY EXPO (L TO R):  
PIT-CREW DAREDEVIL SHAY, JUST SO D TANGERINE, MAYERS SPARK VICTORA



HILLTOP ACRES B  
**DAREDEVIL ET**



DENNIS & TANNER MASHEK, DAREDEVIL'S BREEDERS  
BRETT HAINES, NGG CEO

Order semen today at:  
**BROWNSWISS.COM**

DAREDEVIL © BETH HERGES

WDE PHOTOS © COMS/MOULTAN



DIEGO

**NEW GENERATION**  
GENETICS

P.O. Box 373 Hustisford, WI 53034 USA

TIMEOUT

DESIGN

CARTER

CARTER

CARTER

PHOTOS © COWSMOPOLITAN

*World Dairy Expo Success*

**8 CHAMPIONS • 9 CLASS WINNERS • PREMIER SIRE OF THE COW SHOW**  
16 DIFFERENT NGG BULLS HAD AT LEAST 1 DAUGHTER IN THE TOP 3 OF EVERY CLASS

**PRODUCT OF THE USA**